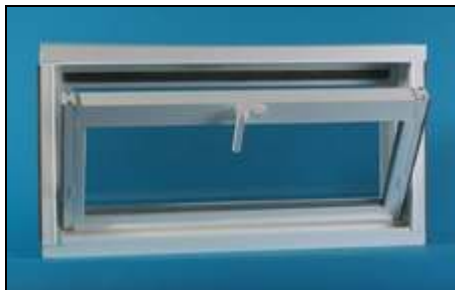


Our Royal Aluminum Line...**Vinyl Windows****Features:**

- Tilt-In Sashes
- Vinyl Construction
- Multi-Hollow Extrusions
- Fin Seal Weather Stripping
- 7/8" Insulated Glass Units with Warm Edge Technology
- Sloped Sill & Drip Cap Header
- Heavy Duty Hardware
- Locking Screens and Night Locks
- Full Lift Rails on Upper and Lower Sashes
- Comprehensive Warranty



- Exclusive Aluminum Reinforced Master Frame Resists Expansion and Contraction
- OR**
- Heavy Duty Multi-Hollow All Vinyl Master Frame With Extra Web to Add Rigidity
- Butted Overlap Sash Construction For Extra Strength

2-LITE SLIDER**(also available in 3-lite Slider)****BASEMENT HOPPER**

**ALL OF OUR WINDOWS ARE
AVAILABLE WITH MULTIPLE
GLAZING AND GRID OPTIONS**

Benefit:

- Easy to Clean
- Low Maintenance
- Maximum Thermal Performance
- Tighter Seal Between Frame and Sash
- Increased Thermal Efficiency & Noise Reduction
- Allows for Proper Water Drainage
- Years of Dependable Operation
- Extra Security
- Easier to Open and Close
- Peace of Mind - We Stand Behind Our Products

WELDED MASTERFRAME WELDED SASH**ARCHTOP**

- Welded Sashes and Master Frame
- Multi-Hollow Prime Extrusions
- Multiple Fusion Points for Strength and Thermal Efficiency
- State of the Art Welding Processes that Exceeds Industry Standards

**SPECIAL GEOMETRIC SHAPES
AVAILABLE IN STANDARD AND
CUSTOM SIZES AND MULTIPLE
GRID PATTERNS**

Vinyl Casement Windows

FULLY WELDED CASEMENT WINDOW



Features:

- Sashes Open to 90 Degrees
- Vinyl Construction
- Multi-Hollow Extrusions
- 7/8" Insulated Glass Units with Warm Edge Technology
- Heavy Duty Locking & Cranking Hardware
- Multi-Point Casement Locks Where Applicable
- Comprehensive Warranty



- Multi-Hollow Prime Extrusions Create Many Air Chambers that Protect Against the Heat of Summer and Cold of Winter
- State of the Art Welding Processes That Exceeds Industry Standards
- Full Screen Included With All Operating Windows

FULLY WELDED AWNING WINDOW



TRIM LINE LOCKING HANDLES



- Perfect Window for the Basement or Other Hard to Reach Locations
- Center Arm Crank Creates Tight Seal
- Full Screen Included
- Double Locks Are Operational On Larger Windows for Greater Security and Efficiency

Strength in an Eye Appealing Handle Minimize Interference with Your Window Treatments

Benefit:

- Easy to Clean
- Low Maintenance
- Multiple Fusion Points for Strength
- Increased Thermal Efficiency & Noise Reduction
- Years of Dependable Operation
- Creates Better Seal by Locking Windows in Multiple Points
- Peace of Mind - We Stand Behind

Bow / Bay Window (exterior view)



SLIDING PATIO DOORS



- Steel Reinforced Sashes
- High Performance Adjustable Brass Rollers
- Heavy Duty Threshold to Stand Up to Years of Traffic
- Extruded Aluminum Sliding Screen With Heavy Duty Steel Wheels
- Custom Sizes Available
- Brass Handles Available

- Made Using Our High Quality Casement Windows
- TRUE 5/4" Head, Seal and Jam Boards
EXTERIOR: Vinyl Sheathed
INTERIOR: Natural Wood (can be finished to taste)
- Rigid Interior and Exterior Mulling Systems
- Installed Cable Support Systems are Available
- Multiple Vent and Deadlite Options Available on Bow and Bay Windows
- All Bays and Bows are Custom Manufactured

(interior view)



ALL OF OUR WINDOWS ARE AVAILABLE WITH MULTIPLE GLAZING AND GRID OPTIONS

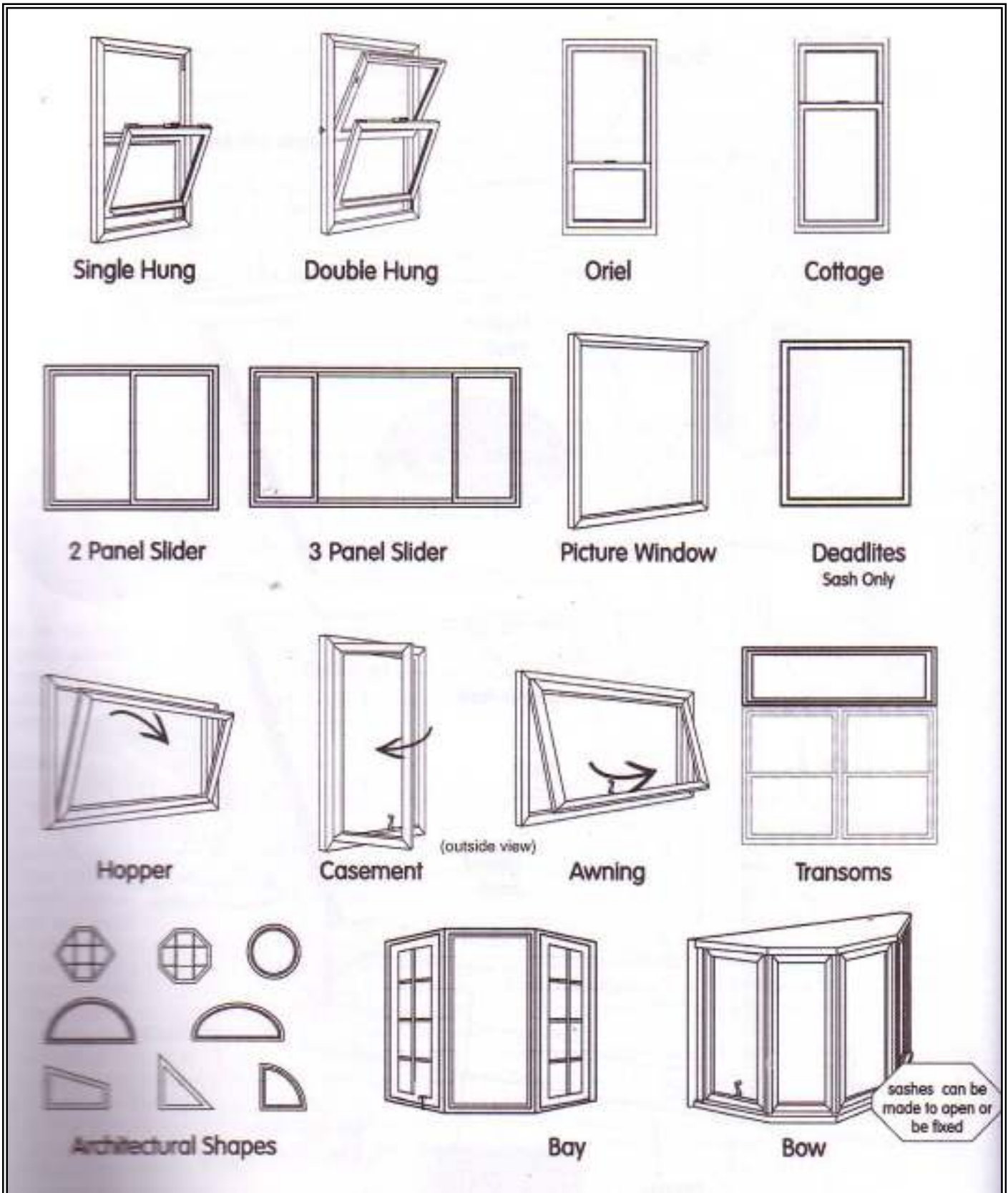
Our Alside Excalibur (Higher End) Welded Frame/Sash

1. **Vinyl frames and sashes will never chip, peel, crack or warp.** Made tough and solid with PVC resin, their color is formulated throughout so the beautiful luster lasts.
2. **Multi-chambered sash and mainframe** create insulating air spaces for thermal efficiency.
3. **Insulated glass unit** featuring double strength glass with optimal air space improves year round performance.
4. **Warm Edge Spacer System** maximizes performance and longevity.
5. **Interlock at sash meeting rails** adds to your sense of security, comfort and well-being.
6. **Protective bulb seal** helps to prevent air infiltration at the meeting rail.
7. **Fully extruded lift rails** provide strength and stability for easy operation.
8. **Drop in glazing** for extra protection from the elements.
9. **Sloped sill** forces water to drain to the exterior of the window.
10. **Hidden screen track** for clean lines and added beauty.
11. **Protective bulb seal at the sill** provides extra protection from the elements – sealing tightly against dust, dirt and air infiltration.

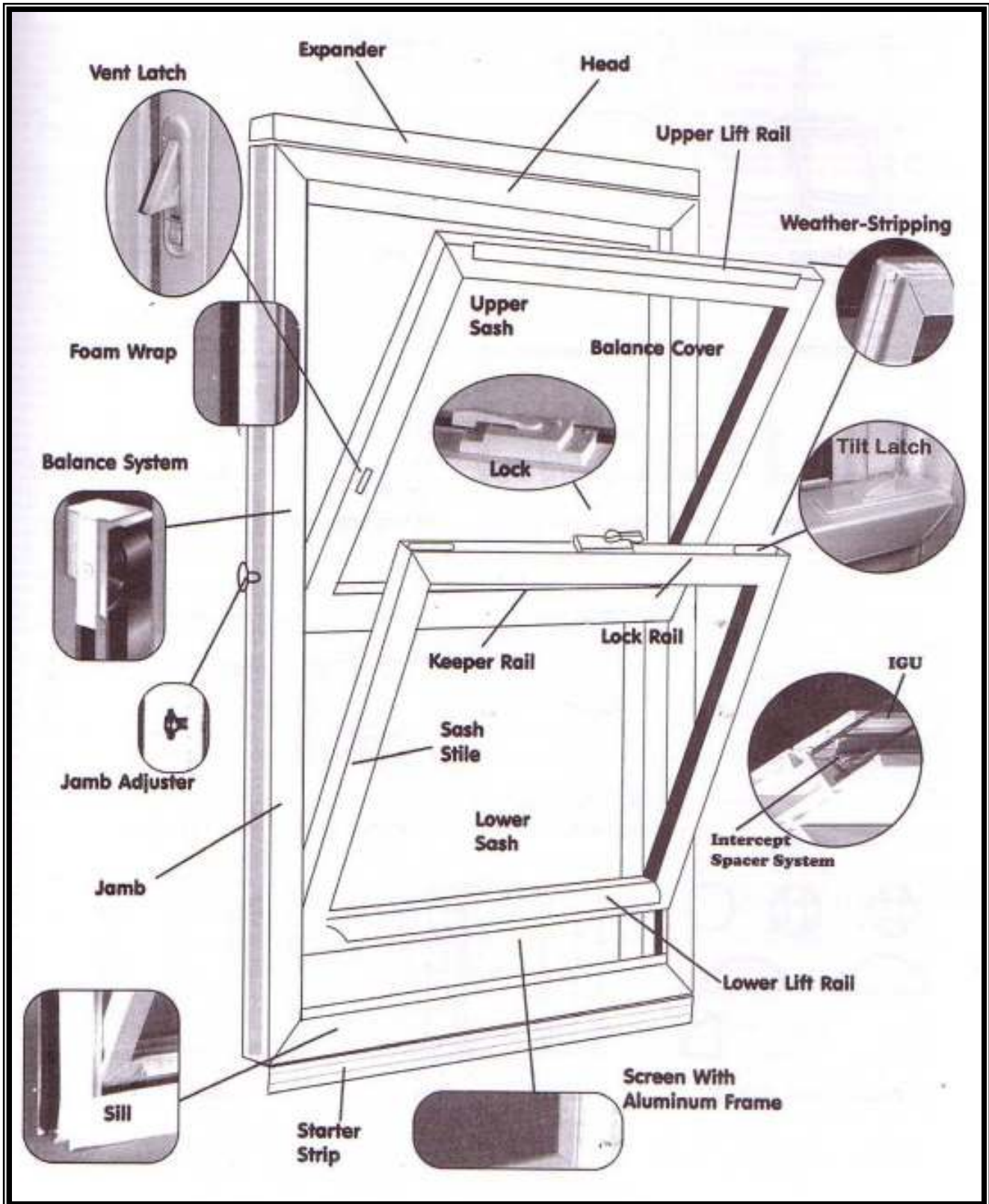
Plus these additional features:

- **Fusion-welded frames and sashes** add strength and rigidity.
- **Dual ventilator locks** provide a safe, secure way to keep windows open for proper ventilation.
- **Full balance covers** help protect against air infiltration while adding a finished look to the window frame.
- **Constant force balance system** eliminates sash cords, weights and pulleys. You'll benefit from smooth, comfortable fingertip operation.
- **Tilt-in top and bottom sashes** make cleaning safe and easy from inside the home.
- **Double barrier-fin weatherstripping** at sash sides helps keep out dirt and noise, and protects against air infiltration.
- **Beveled exterior profile** gives windows a clean, elegant look.





Window Parts



ROYAL ALUMINUM WINDOWS

DOUBLE HUNG ½ SCREEN WINDOWS

0-76 UI: \$119

77-86 UI: \$129

87-102 UI: \$139

*\$2.50 per inch above 102 UI

**Add \$20 for grids

***Add \$35 for Low-E/Argon

CASEMENT WINDOWS AND AWNINGS

0-64 UI: \$160

65-74 UI: \$182

75-84 UI: \$195

*\$2.90 per inch above 84 UI

**Add \$20 for grids

ALSIDE WINDOWS

DOUBLE HUNG ½ SCREEN WINDOWS

0-76 UI: \$149

77-86 UI: \$159

87-102 UI: \$169

*\$2.50 per inch above 102 UI

**Add \$20 for grids

NOTE: United Inches (UI): Width plus Height equals United Inches

Contractors and Investors ask about additional discounts!